



## *Moreton Bay ~ 4 Day Marine Park Adventure*

### **Area Overview ~**

What better way to explore the Moreton Bay Marine Parks' amazing wonders than from your very own Sea Kayak. We have blended the southern, central and northern sections of this aquatic paradise into a fabulous 4 day journey to capture the magic that makes the Bay and its islands so unique.

Moreton Island itself is a 36km-long wedge of mostly of pure silica sand, is a major feature of the south Queensland coast. Some of the best beaches in Australia are found on Moreton Island. This amazing island of more than 17000 ha maintains a fragile balance between its many plant communities on its unique sand-based environment.

The abundance of wildlife, unique reef systems and sand dune ecology, attract many thousands of visitors to Moreton Bay Marine Park every year.

Moreton Bay plays host to thousands of wading birds which migrate from the Arctic tundra, eastern Siberia and other parts of the northern Hemisphere to breed.

We sight dozens of loggerhead & green turtles in our daily travels and Moreton Bay is home to one of the world's major breeding areas. Dolphins regularly check out our activities and if lucky, you may sight the mysterious dugong. Humpback whales are often seen (during season) toward the northern end of the island. There are about 25 species of mammals including possums, echidnas and wallabies found on the islands.

Aborigines occupied Moreton Island and its surrounding islets for more than 1500 years. Middens are a reminder of the long association of the Ngugi people with the island. The rich resources of the surrounding waters and the variety of the island's wild foodstuffs had supported the Ngugi people's island lifestyle.

The history of the islands first settlers, military, mining and shipwrecks covers many years, from first contact, to the handing over of the administration & management to the Parks and Wildlife Service.

Sandmining exploration began on Moreton in 1947. Only small areas were mined. Vigorous campaigns by local and international conservation groups ended in 1992 when the last mining leases were relinquished and the lands added to the national park.

Major coastal defence bases were located on Moreton Island during World War 1 and 11. Remains of gun emplacements, fortifications and controlled mine facilities, protecting Brisbane from sea attack, can still be on the eastern side of Moreton Island.

Queensland's only whaling station operated at Tangalooma from 1952 to 1962. Many of the former station buildings including the flensing deck are a part of the Tangalooma Resort's facilities. Today's visitors have the opportunity to watch whales calving on their yearly northerly migration.

Moreton Bay Marine Park was declared in 1993 and extended in 1997 to cover most of Moreton Bay's tidal lands and tidal waters seawards to the limit of Queensland waters to the east.

We are able to explore and camp along some of the more isolated coast due to our method of travel, which allows us to experience the true Moreton Island wilderness in its natural state. This Moreton Bay Adventure offers a superb paddling environment to discover by sea kayak, even if it's your first time.

The Aussie Sea Kayak Company pioneered commercial Sea Kayaking in Moreton Bay Marine Park and has extended its tour selection to include this memorable experience. We can offer you more insight, knowledge and professional experience on all our tours in the Moreton Bay region.

# Proposed Itinerary ~

The following itinerary should be seen as an approximate guide only. Please note that weather conditions can cause alterations and delays to our itinerary.

Using the Southeast trade winds and, we paddle the protected Western shores of the two largest islands, North Stradbroke and Moreton. This coastline offers some of the most remote paddling found anywhere in the Bay. We cruise through Henderson's Gutter with many Dugong and Turtle encounters within meters of the kayaks. These creatures rarely see many other vessels in this spot and don't seem to be too worried about the quiet slow pace of the kayaks.

Up the coast a little further and we visit the Big Sand Hills. Views from the top are the best you'll find anywhere in the Bay. Working our way further north along Moreton Island we arrive at our last campsite, the Tangalooma Wrecks. The spectacular snorkelling and fish life are a true highlight of this spot with only a short swim from the shore.

## Day 1

### Cleveland Point to Peel Island.

#### Launch Point

We meet at Cleveland Point Boat Launch at 8.30am, Day 1. There are two boat launches, we meet at the launch next to the Marine Rescue building which is on your left, approximately 400 meters before you get to the point.

This is an easy paddle for the first day. We camp in the beautiful Horse Shoe Bay. There is time to snorkel or walk the white sandy beach and start to unwind.

## Day 2

### Peel Island to Big Sand Hills:

This is the biggest paddle for the adventure but its well worth it. We leave Peel island and paddle North making the exciting crossing from North Straddie to Moreton Island. We pull into Kooringal for a rest and lunch, even a cool drink from a very unique shop. We continue our journey North to our camp site for the night, Big sand hills. There is some great walking and good playing on the Big Sand Hills. If you're keen it's a magic place to watch the sun rise.

## Day 3

### Big Sand Hills To Tangalooma

We make our way to Tangalooma. This is a fantastic spot to get the snorkelling gear out. The old wrecks there are teeming with aquatic life.

## Day 4

### Tangalooma to Home:

Day 4 is a great day to finish your book or snorkel around some more of the wrecks. You can spend all day in the water here and not see it all. We take the ferry home at 3pm.

# Tour Cost ~

\$680 per person, 4 days / 3 nights.

# Getting There ~

#### Launch Point:

We meet at Cleveland Point Boat Launch at 8.30am, Day 1. There are two boat launches, we meet at the launch next to the Marine Rescue building which is on your left, approximately 400 meters before you get to the point.

#### Exit Point:

We will connect with one of the two barges that service the island from Tangalooma on the final day of the trip. Returning to the mainland and disembarking from the ferry terminal located at Howard Smith Drive Just out of Brisbane. This will be our ferry departure and drop off point for all passengers upon conclusion of the adventure. It is the participant's responsibility to arrange a pickup from this location to the initial drop off point at Cleveland. Passenger drop offs to Cleveland Point must be made by prior arrangement, and will incur a service charge.

#### Moreton Island Ferry:

The Wrecks ~ Fisherman's Island (1 hour, 15 mins) leaves @ 3:30 pm From the Wrecks  
**(07) 3895 1000**

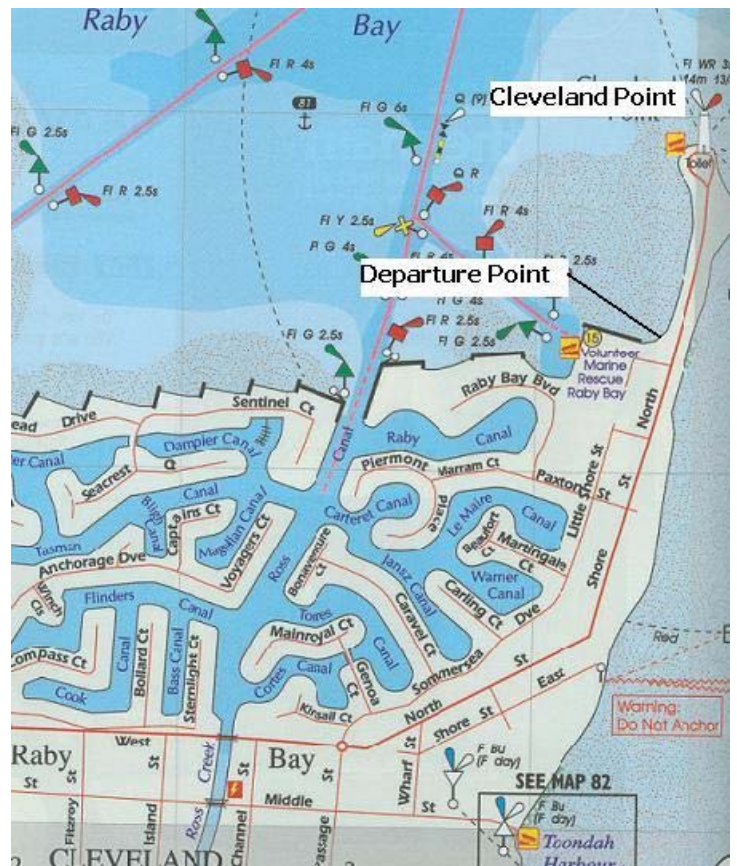
#### Terminal Location:

The Moreton Island Ferry Terminal is located approximately 10 kilometres from the Gateway Bridge toll booth.

#### Directions to the Howard Smith drive Ferry Terminal:

Heading North to Brisbane:

Take the Gateway Freeway, turn off at the Port of Brisbane, Murrarie Exit. Exit before the toll booth.



Heading South to Brisbane:

Take the Port of Brisbane, Murrarie Exit after the Gateway Booth. From the Port of Brisbane, Murrarie Exit follow Lytton Road, it will then merge into Port Drive, then take a left into Kite St, right into Osprey and then left into Howard Smith Drive.

## Bookings / Reservations ~

Many of our tours fill up 2 - 6 months prior to the tour departure, so we suggest you reserve your space well in advance. You can confirm your position on one of our adventures by completing and signing the booking application, medical and waiver forms (1 per participant) and returning them to our office along with the applicable payment.

Mail:

Aussie Sea Kayak Company ~  
PO BOX 1182, Mooloolaba, Queensland , Australia, 4557

Email ~ [info@ausseakayak.com.au](mailto:info@ausseakayak.com.au)

Please Phone: (07) 5477 5335 if you require any assistance.

## Payment ~

The company will confirm your reservation upon receipt of a completed booking application form along with a signed and completed medical and waiver form (1 per participant) and the applicable full payment.

The balance of the tour cost is required 60 days prior to the tours departure.

The only forms of payment accepted by the company are; valid credit card, cash, personal cheques, bank cheques, money orders and direct deposits (with remittance advice).

Direct Deposit:

Bank Details ~ Bendigo Bank  
Account name: Outdoor Pursuits Australia  
Acc No: 123084071  
BSB: 633 000

Please email a remittance advice to the following email address ~ [info@ausseakayak.com.au](mailto:info@ausseakayak.com.au) and include date of transfer, amount, name and reference details.

All prices quoted are in Australian dollars and are inclusive of GST. Please be aware prices are subject to change without notice.

Note: If payment is not received by the due date, (60 days prior to the tours departure) the Aussie Sea Kayak Company reserves the right to treat the reservation as cancelled.

## Booking Cancellation Policy ~

A significant proportion of our expenses, equipment allocation, staffing and logistics are committed and arranged well before any of our tour departure dates and therefore an administration service charge applies to all cancelled bookings.

For notice received:

1. More than 60 days before departure a full refund will be issued.
2. Thirty days prior to departure an Aussie Sea Kayak Company will issue a Voucher equal to the full trip cost which is valid for 12 months and is non-transferable and non-refundable.
3. Within 29 days of tour departure: No voucher or refund.

If it becomes necessary to cancel your trip, please notify us immediately in writing (email / Letter). Upon receipt of your written advice, cancellation will take effect.

## Cancelled Tours ~

Due to the nature of operating outdoors and in wilderness areas, the Aussie Sea Kayak Company reserves the right to cancel any tour prior to departure for any reason what so ever, including inadequate sign-up, which makes the trip economically unfeasible for us to operate or any logistical issues which may impede safe tour operations.

## Our Philosophy ~

Our commitment to you is to organize and operate sea kayak adventures of the highest quality.

We wish to attract healthy, independent individuals with a sense of adventure that wish to explore new regions, waterways and wildlife in a friendly atmosphere.

Our role is to provide you with a safe and comfortable environment in which you can relax, meet new friends and enjoy all aspects of the adventure.

Please do not hesitate to contact us with any queries or questions, however ridiculous they may sound. We're sure we have heard them before! Or check our web site [www.ausseakayak.com.au](http://www.ausseakayak.com.au).

We look forward to seeing you on one of our adventures soon!

*You're paddling partners,*

## ***Aussie Sea Kayak Company***

**Ph:** +61 (07) 5477 5335

**Fax:** +61 (0) 7 5477 5662

**Website:** [www.ausseakayak.com.au](http://www.ausseakayak.com.au)

**Email:** [info@ausseakayak.com.au](mailto:info@ausseakayak.com.au)

**Address**

Shop 9, "The Wharf", Mooloolaba, 4557, QLD

**Location:** Off Parkyn Parade, Underwater World Complex.

**Postal:**

P.O. Box 1182 Mooloolaba, Queensland, Australia, 4557

**Operating Hours:**

Open 6 Days a week

9am ~ 5pm (Closed Mondays)